

A L E X T U R C O
A R T D E S I G N E R

Artistic Surfaces

The frontier of art applied to the interior design world.

Unlike most works of art that can typically be displayed only in rooms with optimal environments, the **ALEX TURCO DECORATIVE ART PANELS** have the versatility of being exhibited and appreciated in any location, including wet areas and outside walls.

The graphic images are laser printed and hand processed on **COMPOSITE ALUMINUM, PURE ALUMINUM** and **BLACKLIT ART PANELS** with several coats of water resistant **epoxy resins**, bringing to life an elegant and unique art form.

Each panel is custom made accordingly to the client's taste and needs: size, pattern, color and finishes can be arranged to create the perfect art work for any environment and request. Among the main features, the possibility to choose between a **flat, moon, brush strokes, bubbles** or **minerals finish**, and between a **glossy** or a **matte** surface.

Given the top-end quality and the extreme versatility both of the design and the material, our company partners with interior design firms, architects, construction companies and business professionals, creating design solutions for the most demanding clients in a number of different applications, from hospitality to residential, from yacht to cruise ship decoration, from retail stores to wellness.



Alex Turco, The Artist

Applications



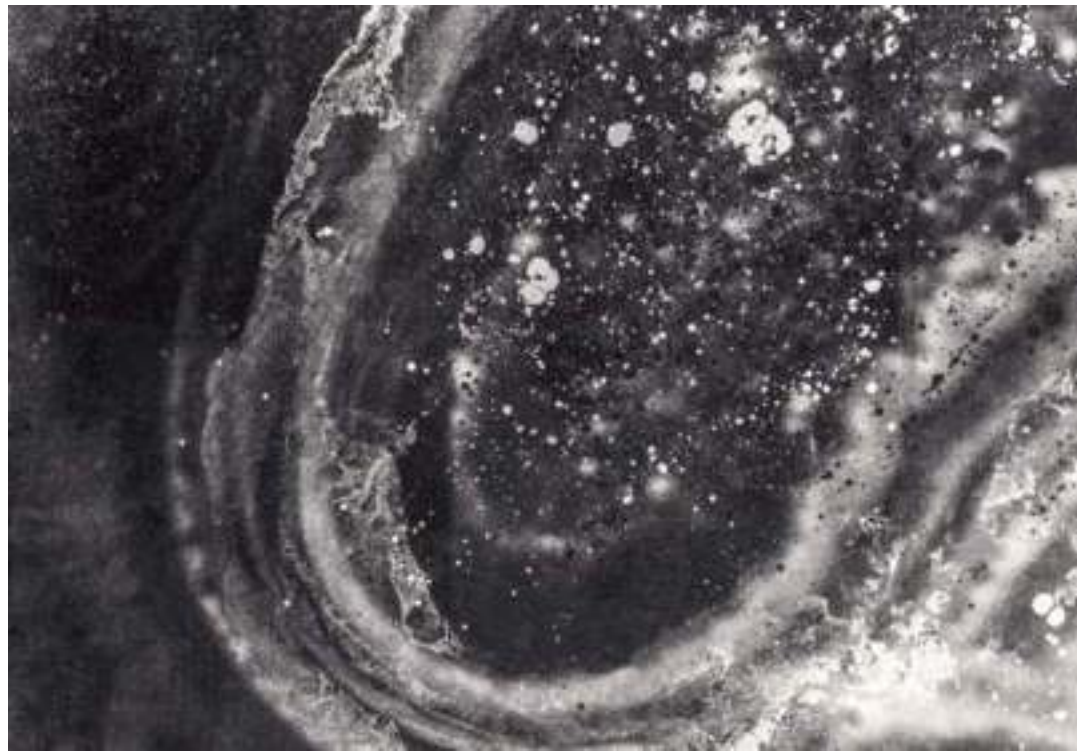
Waterproof feature wall | Miami Beach (FL), USA

Light Silver Flow | Abstract collection | Brush Strokes finish



Private wellness spa | London, UK

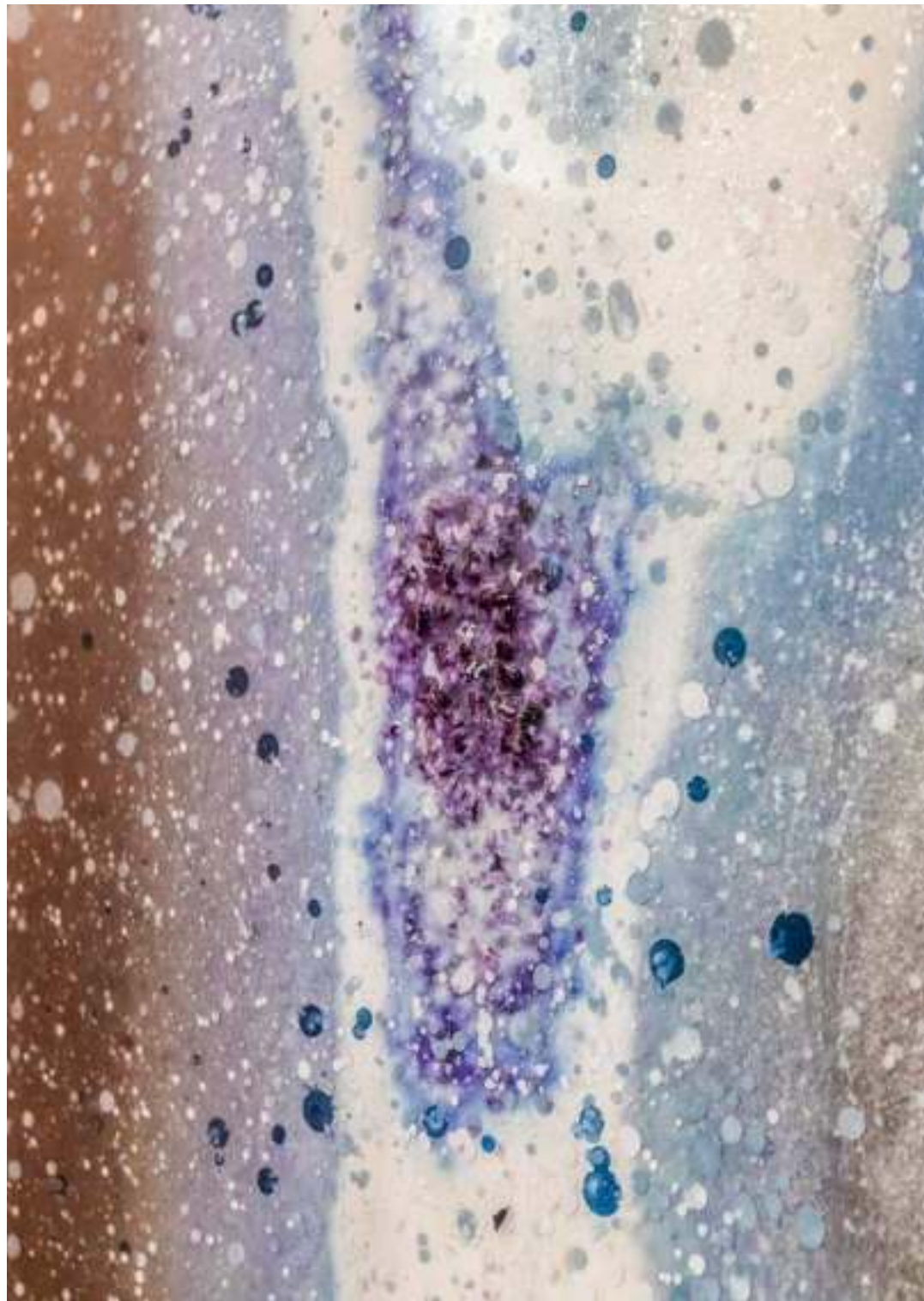
Blue Poison | Underwater collection | Moon + Bubbles finish



Shower feature wall | Toronto, Canada



Malachite in Black | Minerals collection | Flat finish



Waterproof feature wall | Fort Lauderdale (FL), USA



Dark Blob in Blue | Minerals collection | Moon + Minerals finish



Accent wall in a private bathroom | Dubai, UAE

Beige Agate | Minerals collection | Flat finish



Bathroom feature wall | Pinecrest (FL), USA

Light Crust | Minerals collection | Brush Strokes finish



Cigar Room | Sunny Isles Beach (FL), USA

White Smoke | Liquid Dreams collection | Moon + Bubbles finish



Wall and Ceiling | Hudson Yard | New York City (NY), USA

Bronze Vein | Abstract collection | Flat finish



Wall panel systems | Moscow, Russia

Bronze Trust | Oriental Tales collection | Minerals finish



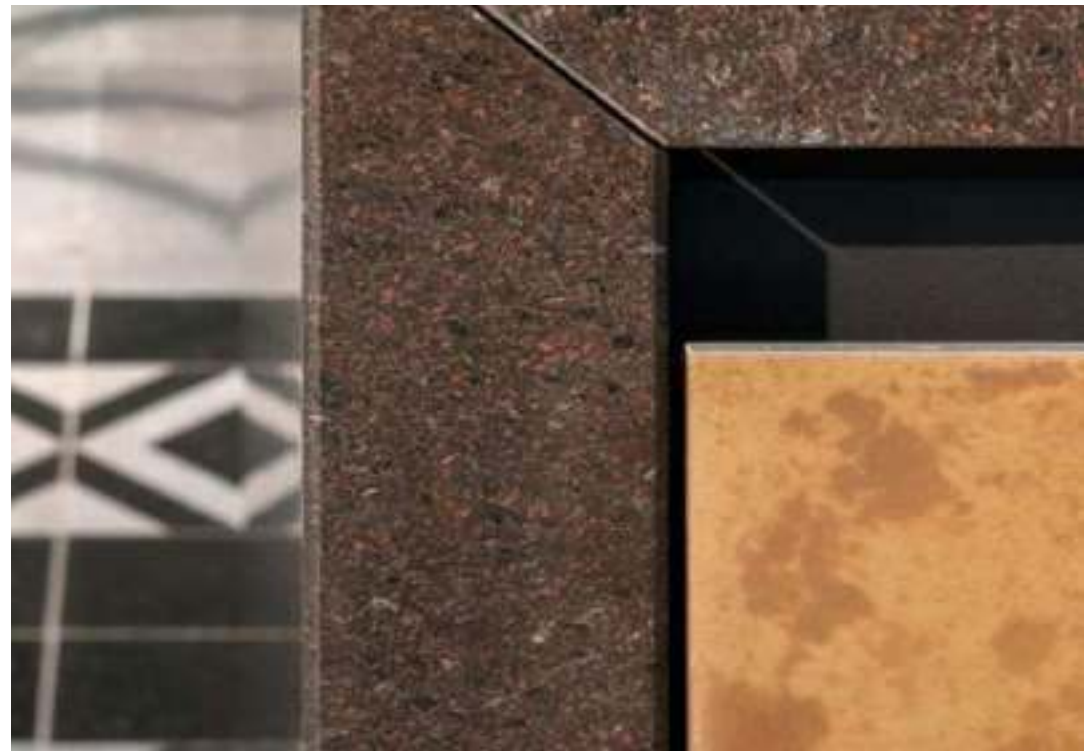
Dining Room | Pinecrest (FL), USA

Nettuno | Minerals collection | Brush Strokes finish



Backsplash | Private Residence | Vancouver, Canada

Cream Galaxy | Abstract collection | Flat finish



Kitchen systems and cabinets | Milan, Italy

Golden Galaxy + Dream On | Abstract collection | Moon finish



Fireplace | Miami Beach (FL), USA

The World is Yours | Middle East collection | Minerals finish



Living Room | Key Biscayne (FL), USA

Buddha Profile | Oriental Tales collection | Brush Strokes finish



Living Area | Beverly Hills (CA), USA

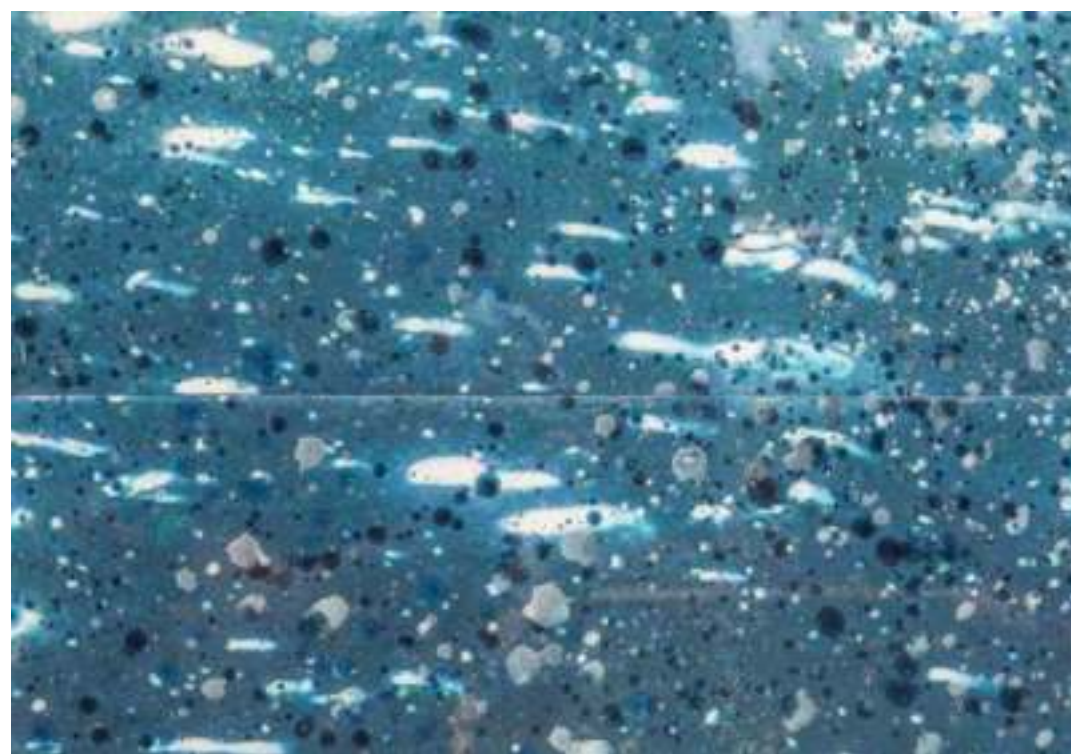
Cream Poison | Underwater collection | Moon + Bubbles finish



Powder Room | Las Vegas (NV), USA

Blue Monolith / Backlit Art Panel | Minerals collection | Flat finish





Outdoor Fountain | Miami (FL), USA

Deeper in Blue | Underwater collection | Minerals finish



Foyer | Moscow, Russia

White Think | Woman Tribute collection | Brush Strokes finish



Bar counter | Los Angeles (CA), USA

Cream Galaxy | Abstract collection | Moon finish



Restaurant walls | Ibiza, Spain

Custom Blue and Brown Poison | Underwater collection | Moon + Minerals finish





Night Club | Miami Beach (FL), USA

DNA in Silver | Organic collection | Bubbles finish



Headboard | Paris, France

Green Monolith | Minerals collection | Flat finish



Curved surfaces and columns | Fort Lauderdale (FL), USA

Drops in Blue and Silver | Underwater collection | Brush Strokes + Bubbles finish



Ceilings | DIOR boutique | London, UK

Silver Flow | Abstract collection | Flat finish



Retail | Louis Vuitton | Beverly Hills (CA), USA

Rusty Sand | Abstract collection | Flat finish



Retail | Fendi | New York City (NY), USA

Golden Wall | Abstract collection | Minerals finish

Collections

Mirror Reflex Collection



Antique Blue



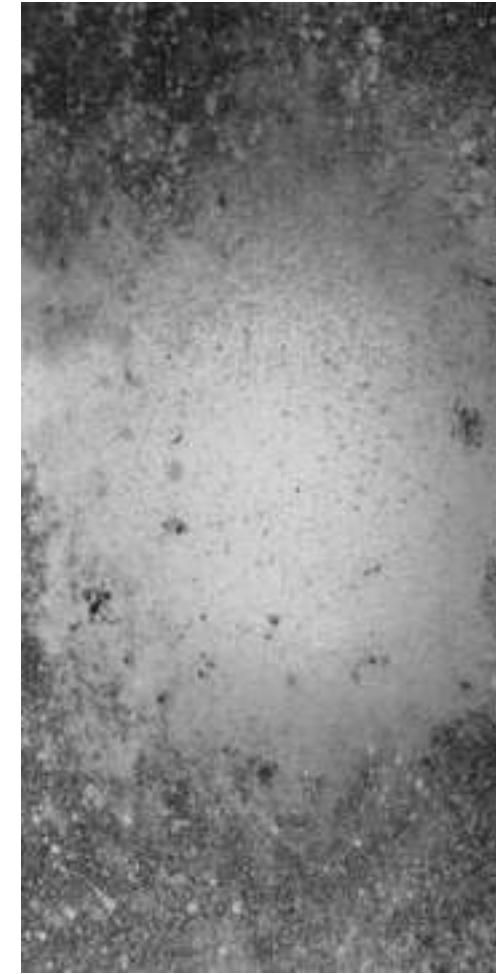
Antique Bronze



Golden Ghost



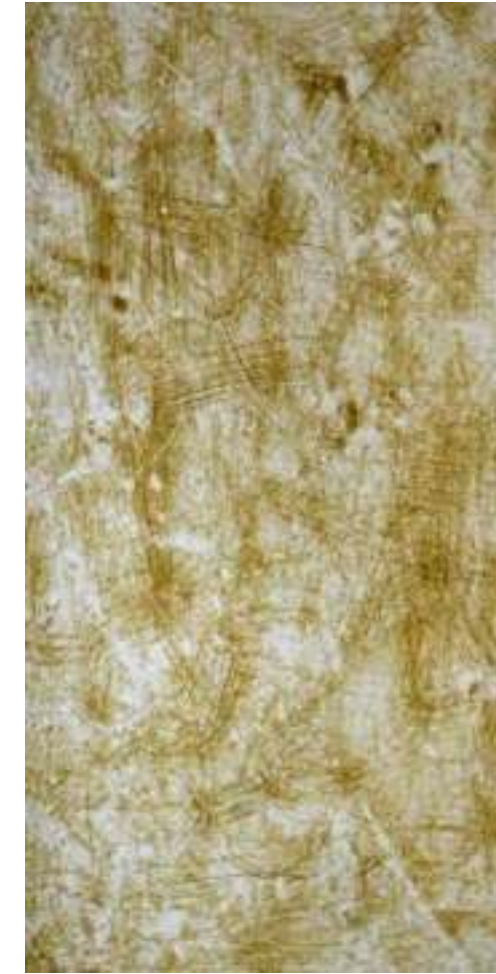
Copper Ghost



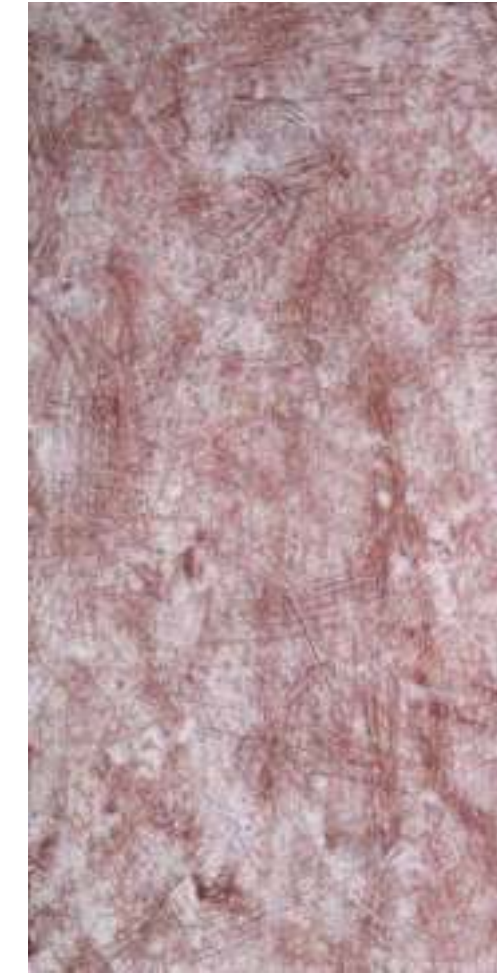
Silver Ghost



Brown Ghost

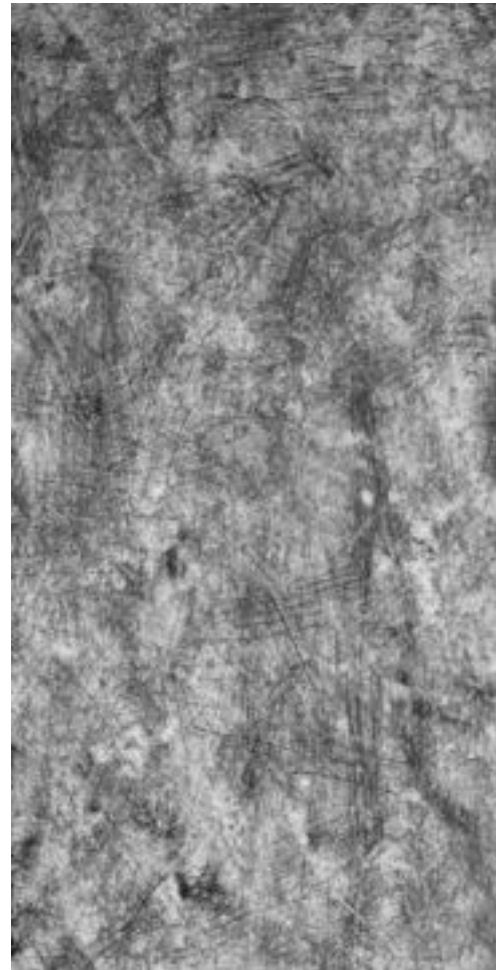


Brass Azarel



Copper Azarel

Mirror Reflex Collection



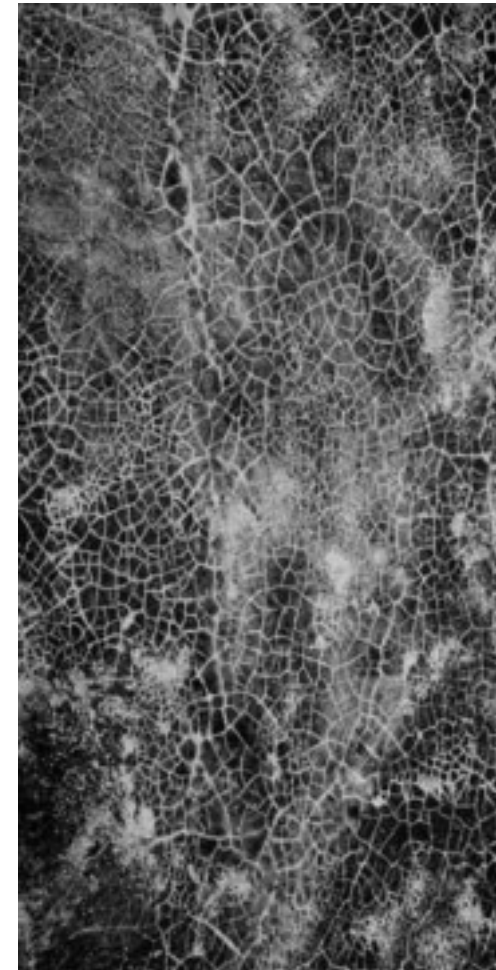
Silver Azarel



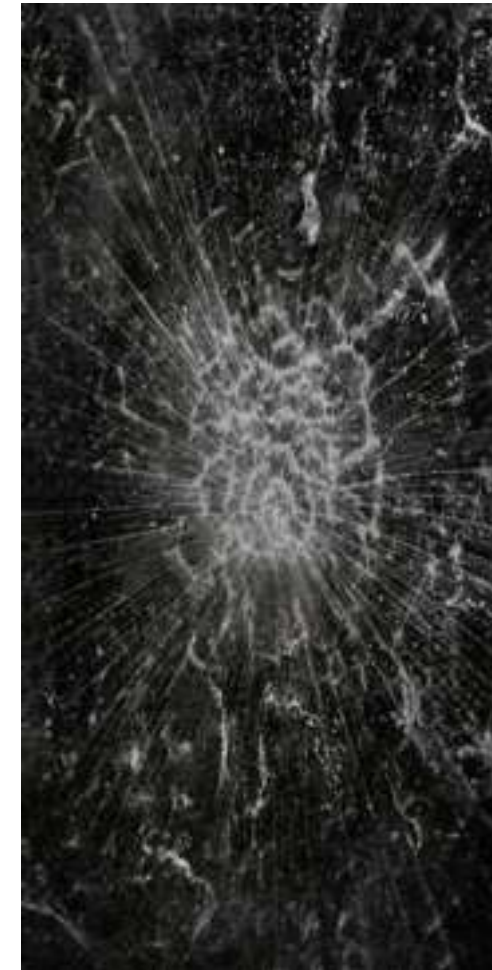
Shagreen



Golden Rivers



Silver Rivers



Black Spider



Black Mercury



Cold Mercury



Warm Mercury

Abstract Collection



White Galaxy



Silver Galaxy



Golden Galaxy



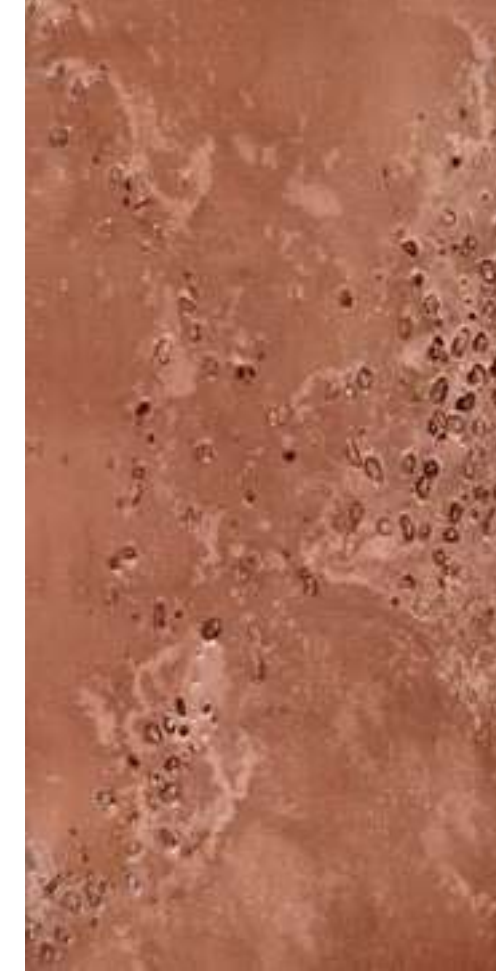
Brass Galaxy



Bronze Galaxy



Champagne Galaxy



Copper Galaxy



Cream Galaxy

Abstract Collection



Green Galaxy



Bronze Vein



Silver Vein



Golden Quartz Cascade



Silver Quartz Cascade



Golden Scratches



Silver Scratches

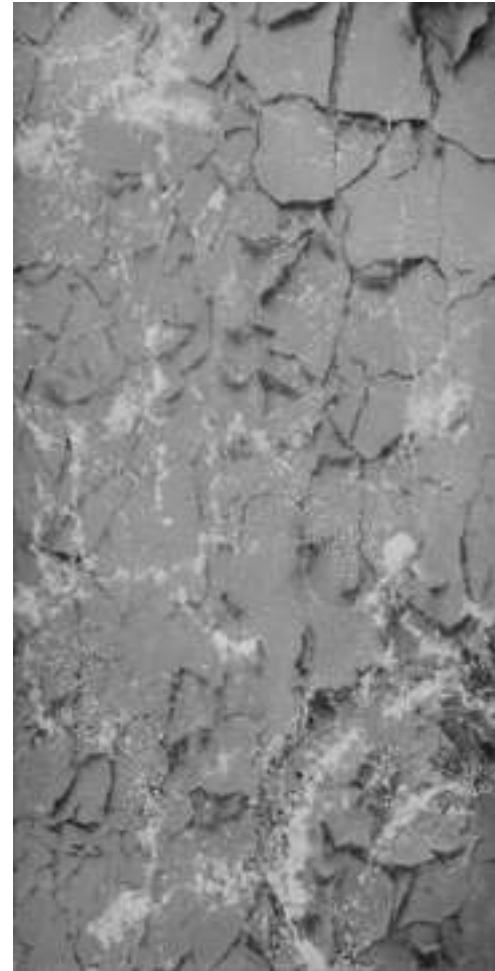


Champagne Scratches

Abstract Collection



Golden Wall



Silver Wall



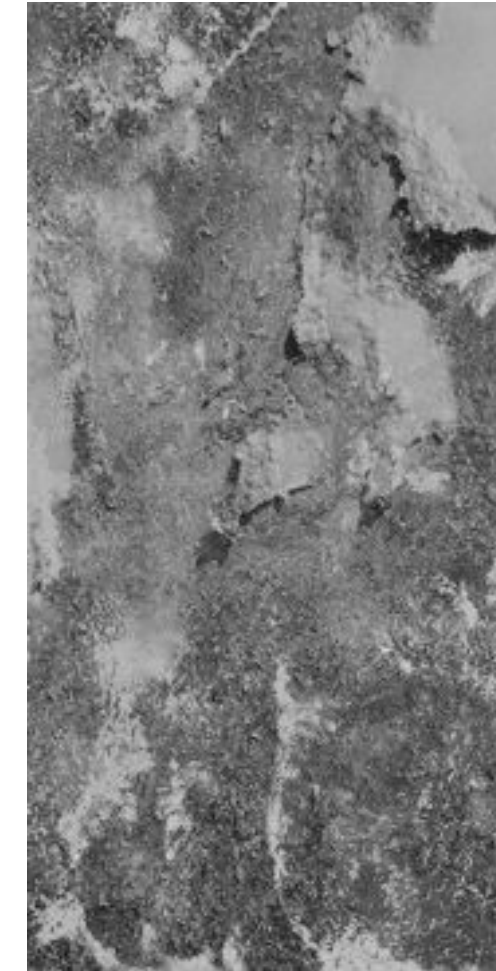
Copper Wall



Champagne Wall



Golden Scrap



Silver Scrap



Nuvola



Light Green Flow

Abstract Collection



Golden Flow



Colors Flow



Copper Flow



Light Gray Blue Flow



Cream Flow



Cream & Silver Flow



Light Silver Flow



Silver Flow

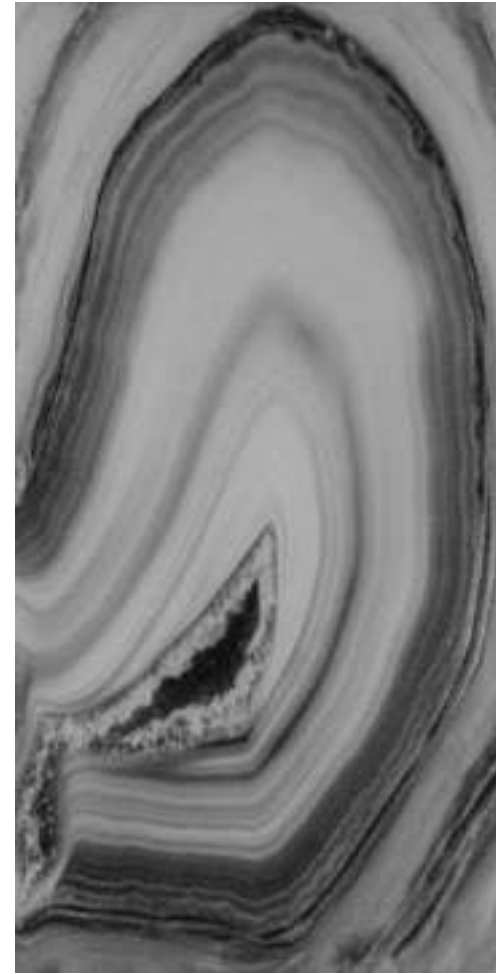
Minerals Collection



Blue Agate



White Agate



Silver Agate



Black Agate



Brown Agate



Golden Agate



Beige Agate



Beige Light Blue Agate

Minerals Collection



White Heart



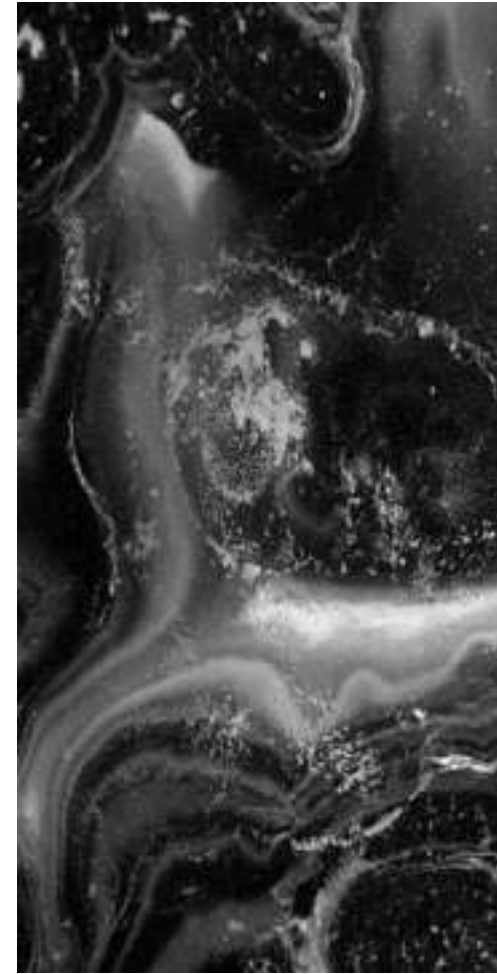
Dark Blob in Brown



Light Blob in Blue



Light Blob in Cream



Black Malachite



Green Malachite



Malachite in Cream



Blue Geode

Minerals Collection



Lapis



Blue Monolith



Purple Monolith



Green Monolith



Dark Crust



Light Crust 1



Light Crust 2



Rock Layers in Brown

Minerals Collection



Rock Layers in Black



Stratum in Brown



Nettuno



Orange Onyx



Black & White Onyx



Cream Waves

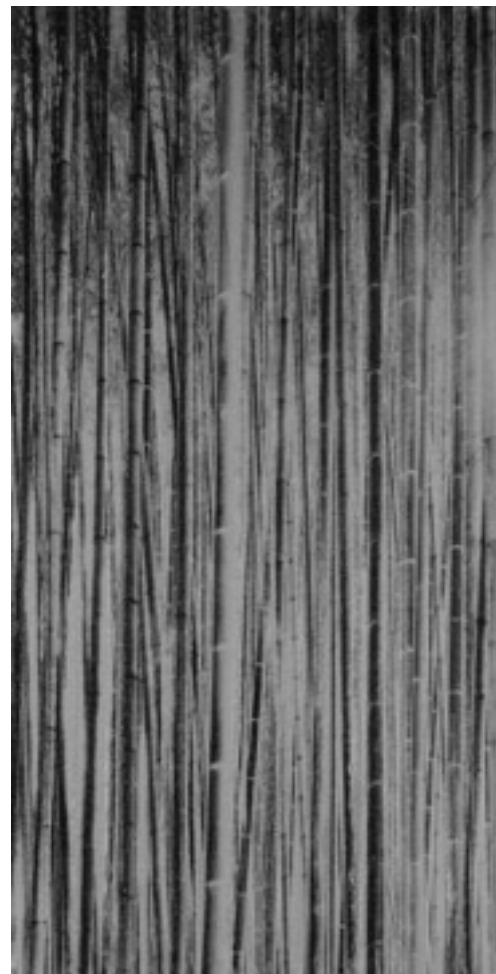


Onyx Layers



Noir Sahara

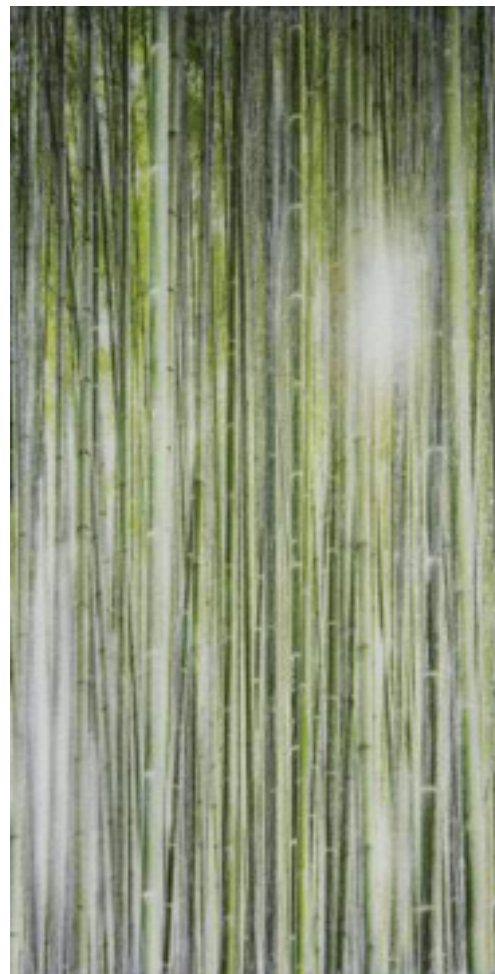
Organic Collection



Bamboo Forest in Silver



Bamboo Forest in Gold



Bamboo Forest in Green



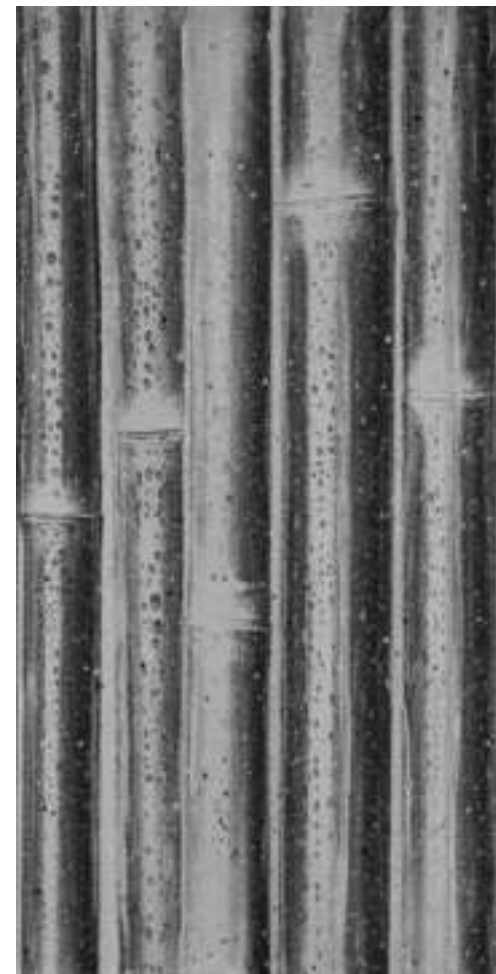
Bamboo Jungle in Brown



Bamboo Jungle in Green



Green Bamboo



Silver Bamboo

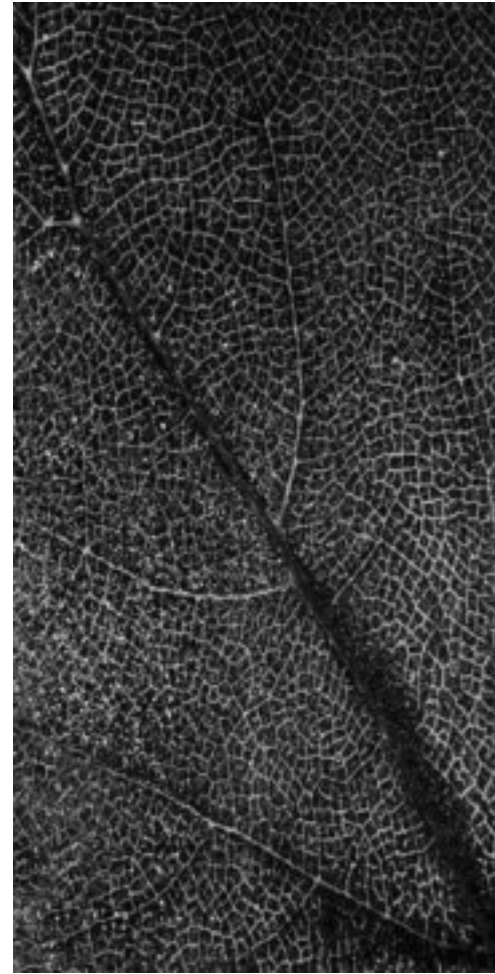


Golden Bamboo

Organic Collection



Bronze DNA



Black DNA



Dark Limbs



Light Limbs



Day in Aspen



Night in Aspen



Golden Palm



Silver Palm

Liquid Dreams Collection



Black Smoke



White Smoke



Black Souls



Blue Souls



Orange Souls



Black Spirits



White Spirits



Fluid

Liquid Dreams Collection



Aspero



Azul



Cohesion in Gold



Cohesion in Silver



Crossing in Blue



Crossing in Cream



In The Blue Rain



In The Silver Rain

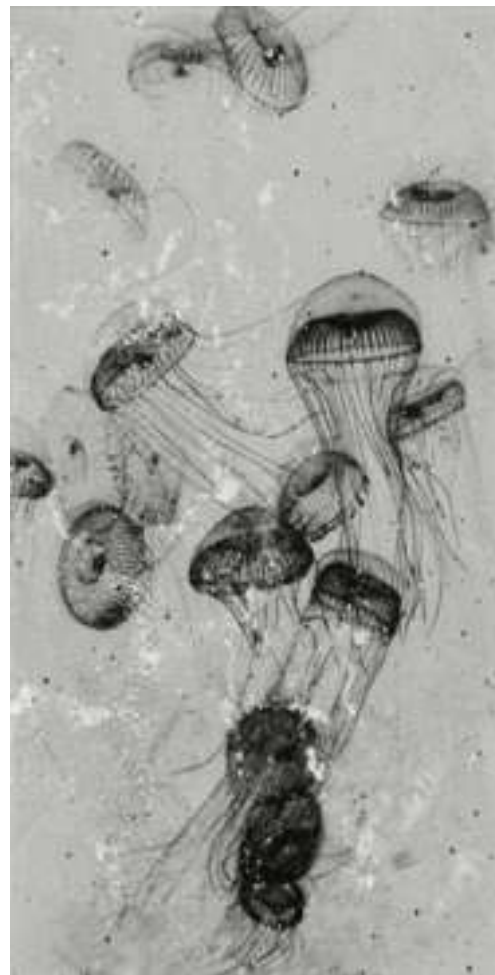
Underwater Collection



Blue Poison



Black Poison



Silver Poison



White Poison



Golden Poison



Brown Poison



Cream Poison

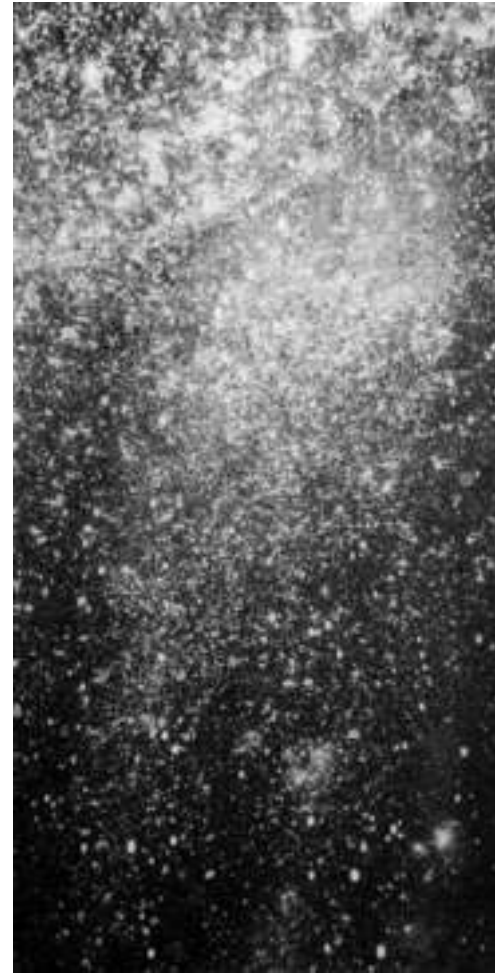


Green Aurelia

Underwater Collection



Deeper in Blue



Deeper in Black



Deeper in Dark Cream



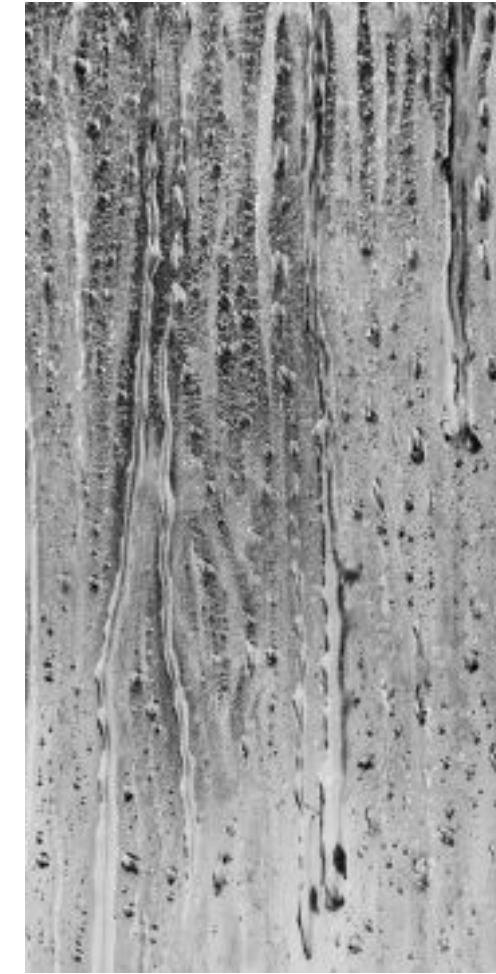
Deeper in Cream



Drops in Blue



Drops in Blue & Silver



Drops in Silver



Drops in Cream

Oriental Tales Collection



Buddha Profile in Cream



Buddha Profile in Silver



Bronze Trust



Golden Trust



Silver Trust



Setai Camu



Setai Face in Cream



Setai Face in Silver

Technical Info & Details

FOREWORD:

The DECORATIVE ART PANELS created by Alex Turco Art Designer are artistic coverings suitable for any location or environment.

Our panels are fantastic indoors as well as outdoors, as they can withstand water and moisture and almost any atmospheric agents, even locations subject to extreme weather conditions. They are ideal for commercial spaces. However, they can also work well in private spaces that would not otherwise be suitable for a large scale artworks. Now these spaces can become the focus of ambitious installations (wet areas, showers, outdoor living, wall decorations, furniture and doors, counters and backsplash, elevators, ceilings, curved walls and columns).

In fact, this product maintains its characteristics of durability, impermeability and non-toxicity even under prolonged exposure to extreme weather conditions.

The art panel is manufactured by assembling three elements: A) composite aluminum or pure aluminum sheet + B) digital UV printing customized through graphics plus additional handmade and artistic touches using acrylic paints and metal powders + C) a surface made of layers of transparent and waterproof bi-component epoxy resin.

We do not recommend installing our panels as a stove backsplash as extreme heat and flames could damage them. Our panels can be used ONLY with electrical stove for use of backsplash.

SUPPORT:

Our artworks are made from a smart and versatile material produced by ALCOA, from which we use two different types:

- COMPOSITE ALUMINUM which is made of two sheets of aluminum sandwiching a solid core of extruded thermoplastic material formed in a continuous process using no glues or adhesives between dissimilar materials.

(For a complete technical overview please visit reynobond.com)

- PURE ALUMINUM which is a flat sheet composed only of simple aluminum.

(For a complete technical overview please visit reynobond.com or reynolux.com)

These supports are very light and workable materials: they are easy to mill, cut, bend, fold and silk-screen print. The greatest value of these materials lies in its ability to accept digital printing directly on its surface with excellent results, as well as their key characteristics:

Suitable for use both indoors and outdoors; UV ray resistant; perfectly flat; incredibly light; completely soundproof (they do not resonate); easy to work with and requires no anti-static treatment.

The technical data of the support are as follows:

COMPOSITE ALUMINUM:
Thickness: 0.15" / 4 mm
Panel maximum size available:
5' x 10' in the Americas
2000 x 4000 mm in UE- Asia
Weight: 1 lbs x sq/ft / 5 kg x sq/mt
Thermal resistance:
From -122°F to +176°F / From -50°C to +80°C

COMPOSITE ALUMINUM MIRRORED BASE:
Panel maximum size available:
4' x 8' in the Americas
1220 x 3050 mm in UE- Asia

PURE ALUMINUM:
Thickness: 0.040" / 1 mm
Panel maximum size available:
4' x 10' in the Americas
1250 x 2500 mm in UE- Asia
Weight: 0,40 lbs x sq/ft / 2 kg x sq/mt
Thermal resistance:
From -122°F to +176°F / From -50°C to +80°C

BACKLIT ART PANEL:
Thickness: 2 mm -10 mm
Panel maximum size available:
6' x 10' in the Americas
2000 x 3050 mm in UE- Asia
Weight: 2 lbs x sq/ft / 10 kg x sq/mt

PRINTING AND COLORS USED:

The images chosen by the art designer are re-worked using graphic design software tools and digital photo retouching effects.

The artistic result represents the basis on which the designer operates, first using acrylic colors through casting, brush and sponge, and then using metallic powders diluted in alcohol.

The uniqueness and value of these artworks arise specifically from the artistic handmade work performed on each individual plate.

The digital picture is transferred on the aluminum through an ink jet printer that uses liquid -UV curable -ink: The colors dry quickly thanks to the exposure to ultraviolet rays, which solidify and secure them to the support.

The printing technique is based on a CMYK (four colors) process. The range of colors is controlled through dedicated software which features the full color spectrum.

The characteristics of the -UV curable- color printing process are the following: the LED lamps UV ray frequency spectrum is non-harmful to health; the inks have very low emission of volatile organic components (VOCs); there are no toxic substances, and color saturation is optimal.

FINISHING LAYER AND PROTECTION:

Plate protection and full waterproofing of the digital prints are performed manually by spreading a bi-component, self-leveling EPOXY RESIN that is solvent-free and ready to use by simply mixing the base.

Component A: solid epoxy resin of bisphenol A and epichlorohydrin, liquid novolac epoxy of bisphenol F and epichlorohydrin.

Component B: catalyst (cycloaliphatic polyamines) which provides effective protection and high resistance to aggressive chemicals, acids, bases, oils, and grease.

The client can choose between 2 types of finishing in order to have either a GLOSSY or a MATTE effect; both will protect the panel over time as well as consolidate the art layer underneath.

The main characteristics of this finishing are as follows: surface that does not yellow over time, is waterproof, solvent-free and therefore non-toxic.

Moreover, other than the FLAT finish it is possible to have MOON, BRUSH STROKES, BUBBLES, RAIN, or MINERALS finish where natural elements (sands, crystals and minerals) are integrated during the process for additional textural and visual elements.

INSTALLATION:

The surface where the artwork will be installed must be flat and free of bumps, lumps, and relief. It is necessary to make sure that the surfaces to be glued are clean, dry and degreased. For gluing wood, wood moisture must not exceed 15%.

In the case of gluing on metals, the oxidized surface layers must be removed (through sanding and then washing using a degreasing solvent such as acetone).

It is necessary to sand the fiberglass surfaces or very smooth surfaces with sandpaper.

When used in moist locations with walls in plasterboard, gypsum plasters, cement plasters or marine plywood, we recommend first to waterproofing the surface with an easy to find product, such as the WPS MAPEGUM by MAPEI or similar

The data sheet can be downloaded from this link: www.mapei.com/public/COM/products/2014_mapegum%20wps_gb.pdf.

Skilled installers are necessary in order to mount the panels. We recommend professional tile, marble and mosaic installers. We suggest the use of single component polyurethane adhesive products that are both moisture and thermal stress resistant.

As a guideline, the use of a quality products suitable for this purpose and easily available in all countries are: Liquid Nails - Bostik - Trade Fix - Simson - Den Braven or KERALASTIC T flexible setting compound manufactured by MAPEI (in the USA market the product name is PLANICRETE W) or any equivalent.

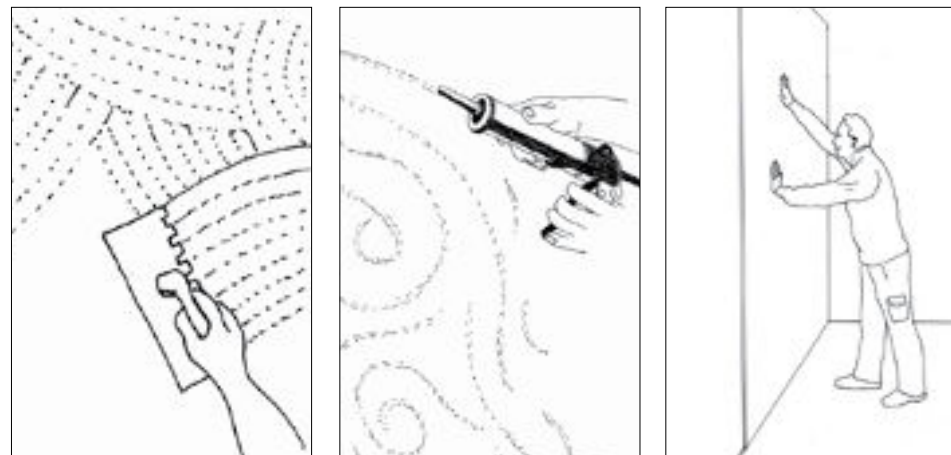
The data sheet can be downloaded from this link: www.mapei.com/public/COM/products/122_keralastic_gb.pdf.

The adhesive must be spread evenly on the wall using a toothed spatula.

(see the picture)

The artwork can be applied and locked in place by applying pressure with the palm of the hand.

(see the picture)



DRILLING AND ADJUSTING ON SITE:

The panels can be easily cut at the job site following these instructions:

- Small and simple cuts can be done using a variable-speed rotary tool ("Dremel 3000" suggested) with Metal cutting disc ("Dremel EZ Lock Cutting kit" suggested); you will only need to trace a line then follow it with metal cutting disc mounted on the rotary tool, then sand it with sandpaper (grit 100) to clean the cut.

We normally advise the use a professional metal ruler and masking tape in order to prevent scratches on the epoxy resin on the panel.



- Bigger cuts can be done using professional machinery such as the CNC ROUTER-PANEL SAW WALL SYSTEM. Better yet is to use a TABLE SAW with a specific fine tooth laminate grade blade to prevent chipping the resin.

We always advise to make all cuts on the back of the panels to prevent resin from chipping or peeling.



- Round cuts (such as the ones needed to install shower fixtures or any other hole that needs to be made in order to install lights or pipes), we advise the use of a hole saw for metals, or a regular drill that will allow you to make several small holes so that the resin will not chip or break.



MAINTENANCE AND CLEANING:

The surface of the panel does not require special maintenance.

The resin treatment makes the surface resistant to stress, wear and tear; however, for regular cleaning we recommend cleaning products that are free from abrasives substances in order to prevent surface scratching. There are many standard detergents on the market that are suitable for this use such as Viakal, Jif, Viss or Cif Soft Cream or Bathroom mousse; also any glass product is ideal for daily cleaning.

We do not recommend the use of bleach or thinners of any kind.

To obtain a beautiful finish, we recommend using a microfiber cloth with spray cleaner such as Menzerna Top Inspection, or Meguiars Final Touch.

After a couple of months, we recommend treating the panel with a wax or polish.

When polishing, we recommend you use two polishing compounds with a circular polisher in the following order: Meguiars Ultra-Cut Compound 105 or 3M "Perfect It" Machine Polish 06064.

