

Strie

2550.01 - 2550.29



Product

Wallcovering

Description

Plain basic woven wallcovering with a luxurious sheen in earthy tones

Composition

100% xorel® (85% biobased polyethylene, 15% polyethylene) on x-protect wall™ (paper backing)

Width

± 132 cm, ± 52 inches

Weight

± gr/m², ± 16 oz/yd¹

Flame retardancy

EN 13501 , B, s1 - d2

ASTM E84 , Pass, A

Labels



Strie

2550.01 - 2550.29



2550.20



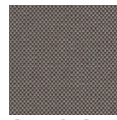
2550.21



2550.22



2550.23



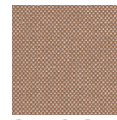
2550.24



2550.25



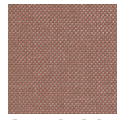
2550.26



2550.27



2550.28



2550.29



2550.19



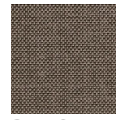
2550.18



2550.17



2550.16



2550.15



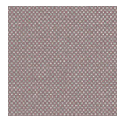
2550.14



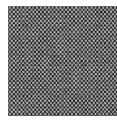
2550.13



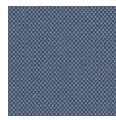
2550.12



2550.11



2550.10



2550.09



2550.08



2550.07



2550.06



2550.05



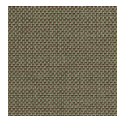
2550.04



2550.03



2550.02



2550.01